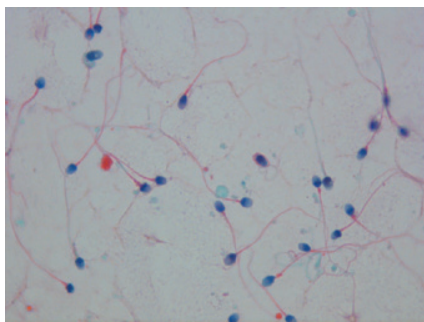
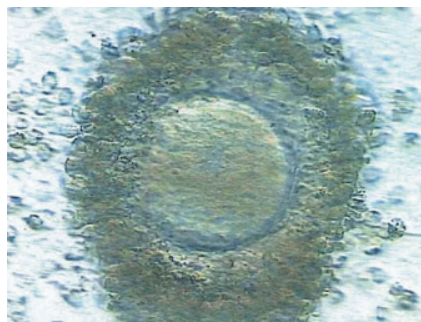


Embryo Development

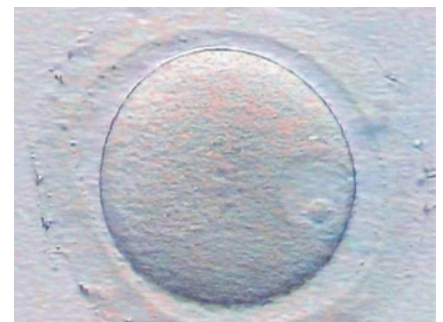
The egg, the sperm and the zygote: Day 0 to day 1 after egg collection



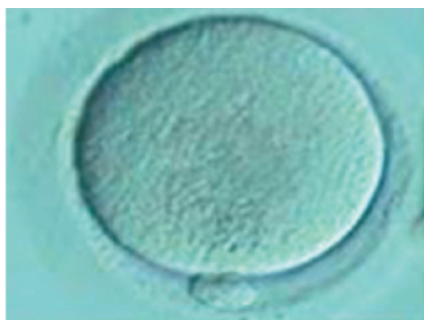
Stained Image of Sperm
(Day 0)



**Egg Surrounded
by Cumulus Cells**
(Day 0)



**Immature Egg
(Germinal Vesicle)**
(Day 0)



Mature Egg with Polar Body
(Day 0)



**Normally Fertilised Egg
(Zygote) (Day 1)**



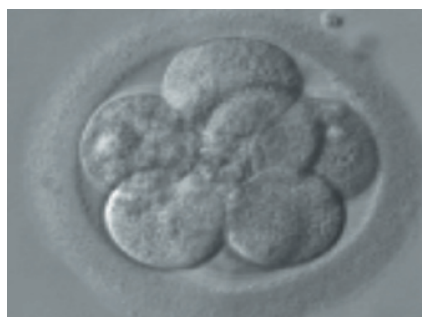
2 Cell Embryo
(Day 1-2)

Embryo and Blastocyst Development

Day 2 to Day 7 after egg collection



4 Cell Embryo
(Day 2)



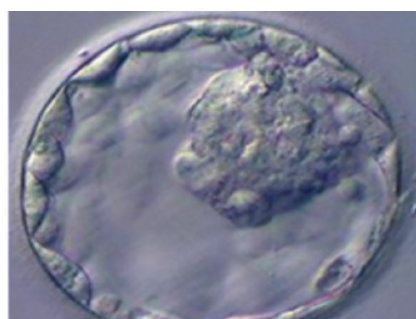
8 Cell Embryo
(Day 3)



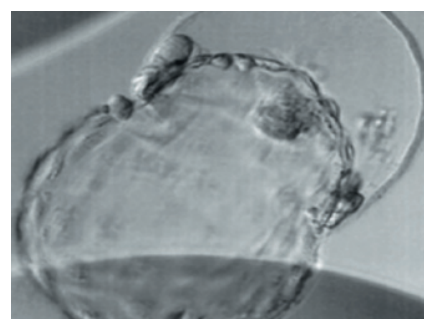
Compacting Embryo
(Day 4)



Early Blastocyst
(Day 5)



Expanded Blastocyst
(Day 5-6)



Hatching Blastocyst
(Day 6-7)